

Create an Alphabet Poster

Make learning fun for you and the children in your life! With this tutorial we'll show you how to combine Picture Tubes and text to make an alphabet poster. Along the way you'll learn about layers, vector text, and drop shadows, and when you're done, you'll have a poster you can use to teach your children the alphabet.

What you'll need:

- Jasc® Paint Shop™ Pro® Studio
- Picture Tubes™ from Jasc.com

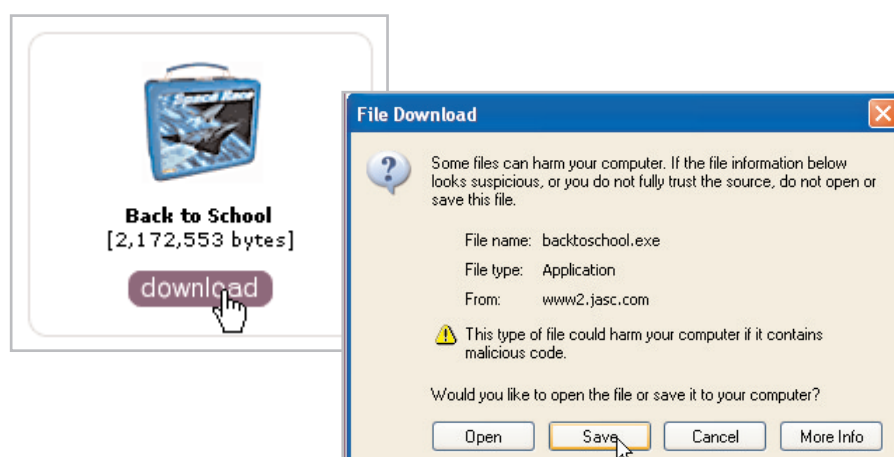
When you complete this tutorial, you'll be able to:

- Download and install Picture Tubes™
- Create a new image
- Create new layers
- Use Picture Tubes
- Add text to an image
- Add drop shadows

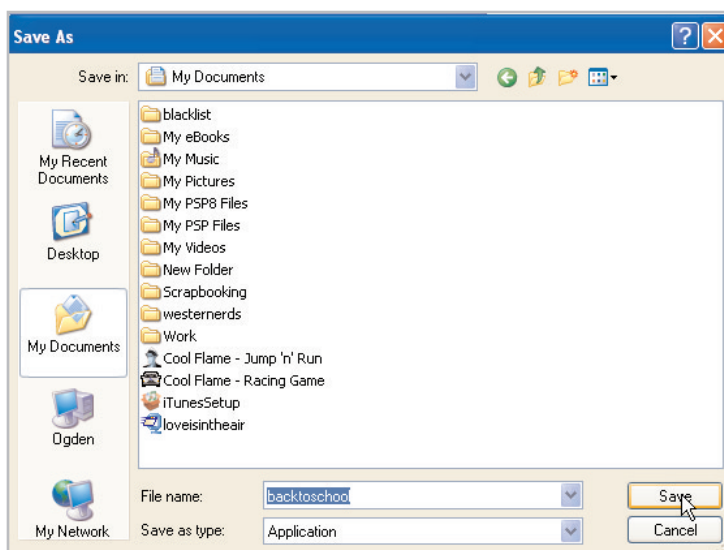


Download Picture Tubes

1. Before you get started, make sure you visit the Creative Downloads Area of Jasc.com. Here you can download FREE Picture Tubes to use in all your projects. (link to: <http://www.jasc.com/community/creative/tubes.asp>)
2. On the page, find a Picture Tube you'd like to download. For this example we're going to download the Back to School Picture Tubes. When you're ready, click **download**. On the File Download box, click **Save**.

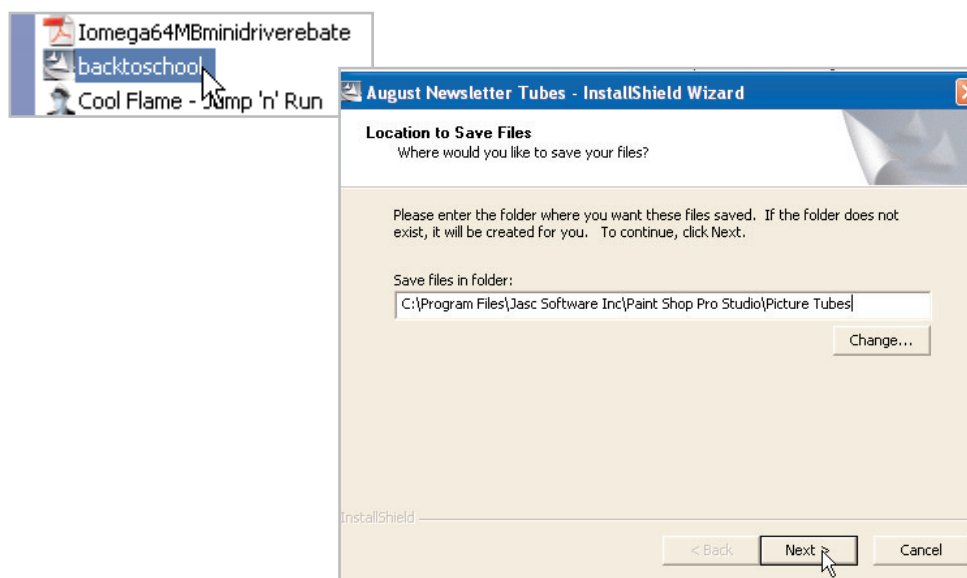


3. In the Save As dialog choose a download location for your Picture Tubes. Make sure to save the file to a place that's easy to locate like your desktop or My Documents folder. For this example we're going to save to the My Documents folder. When you've found a location, click **Save**.



Install Picture Tubes

4. Navigate to where you stored your Picture Tube download. Double-click the file to begin the installation. Since we're using Paint Shop Pro Studio, we need to change where the files will be saved. The default location for the Picture Tubes folder in Studio is:
C:\Program Files\Jasc Software Inc\Paint Shop Pro Studio\Picture Tubes
If, when you installed Studio, you installed it to the default location you can just copy this line and paste it into the Save files in folder field.



Note: If you changed the installation location of Paint Shop Pro Studio or your Picture Tubes folder, click **Change** and navigate to your Picture Tubes folder.

5. When you have the new location entered click **Next**. Once your Picture Tubes are installed click **Finish**.

Tip: You can download and install as many Picture Tubes as you'd like. For this project, we installed all of the tubes available on Jasc.com.

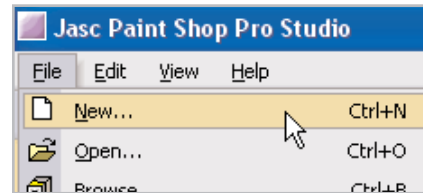
Create a New Image

6. Choose **Start > Programs > Jasc Software > Jasc Paint Shop Pro Studio** or double click the Paint Shop Pro Studio Icon on your desktop to open Paint Shop Pro Studio.



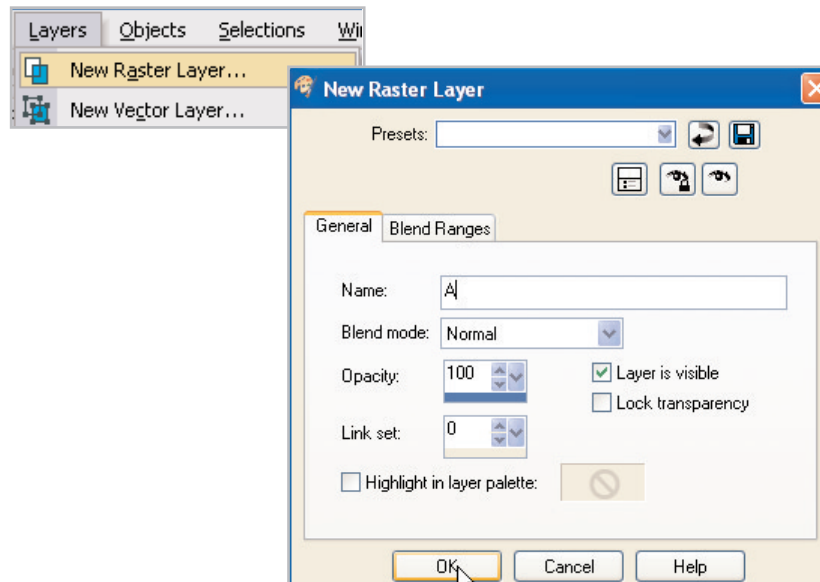
7. Choose **File > New**. In the New Image dialog set:
- Units: **Inches**
 - Width: **8**
 - Height: **10**

Once you've made your settings, click **OK** at the bottom of the dialog.



Add a New Layer

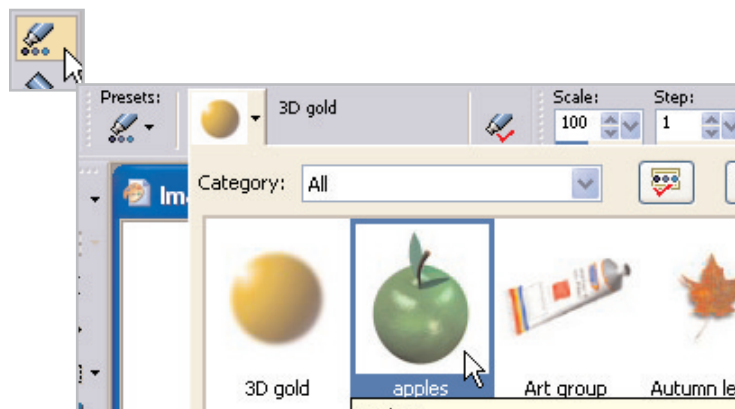
8. Since we want to be able to move the Picture Tubes, we'll put each letter's tube on a separate layer. Choose **Layers > New Raster Layer**. In the New Raster Layer dialog, change the Name to **A** and then click **OK**.



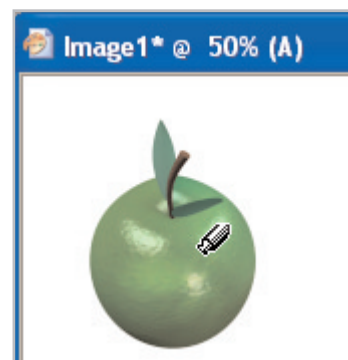
9. Now on your Layer Palette, in the lower right portion of your workspace, you should see a new layer called A.

Add a Picture Tube

10. From the Tools toolbar, select **Picture Tubes**. On the Tool Options Palette, click the arrow next to the Picture Tube preview, and select the tube you'd like use. For this example we're using the Apples tube we downloaded from Jasc.com.

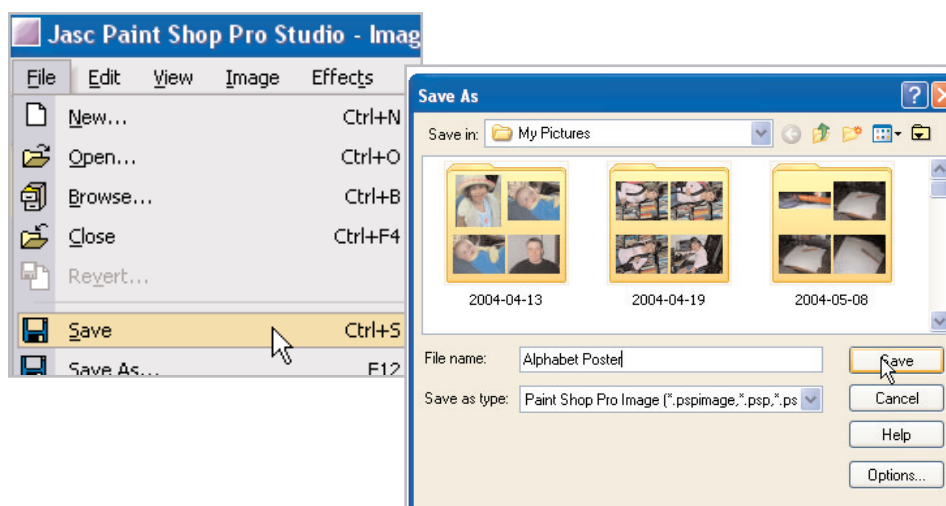


11. Click your image to place the tube. If you don't like the one you were given or the placement of the tube, press **Ctrl + Z** to undo the tube placement, and then click again to place a new tube. You can undo the tube until you get the one you like.



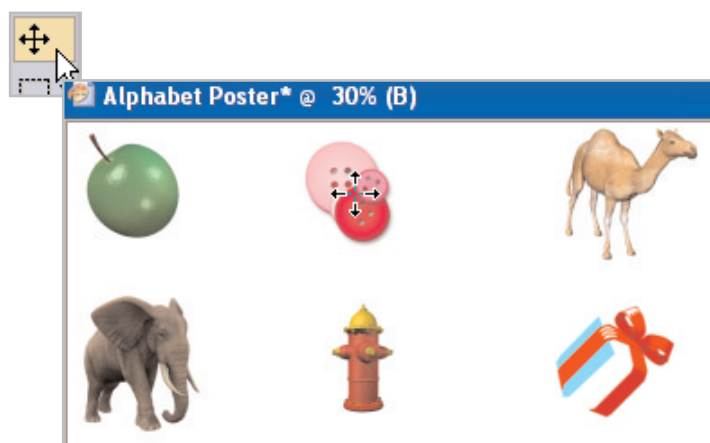
Save Your Image

12. Now, before you go any further, it's a good idea to save your new image. Choose **File > Save**. On the Save As dialog, give your image a name (we called ours Alphabet Poster) and then click **Save**.



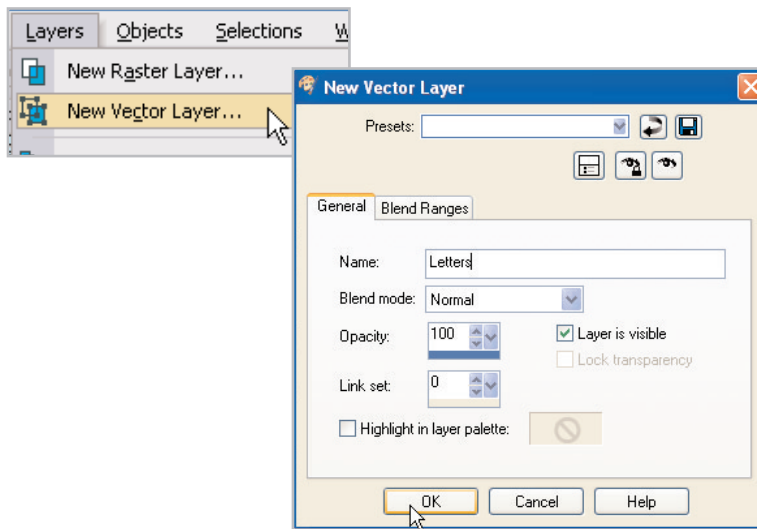
Move Picture Tubes

13. Repeat Steps 8 – 11 for each letter of the alphabet. Make sure to save your image between each letter.
14. To move a Picture Tube, select the **Move** Tool from the Tools toolbar. Now, click the tube you'd like to move and drag it into position.

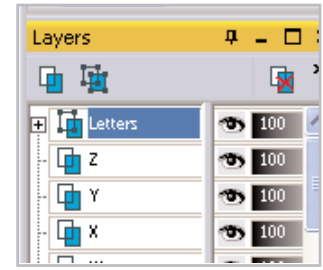


Add a Vector Layer

15. Once you've got all 26 of your Picture Tubes in place, you're ready to add the letters. Choose **Layers > New Vector Layer**. In the New Vector Layer dialog, change the name to **Letters** and click **OK**.

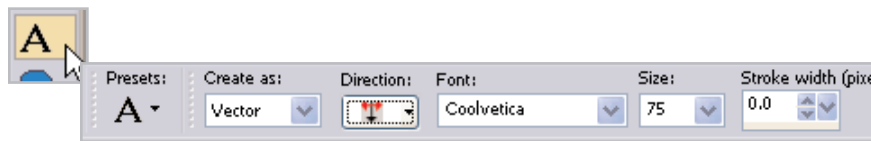


16. On your Layer Palette you should see a new layer called Letters.

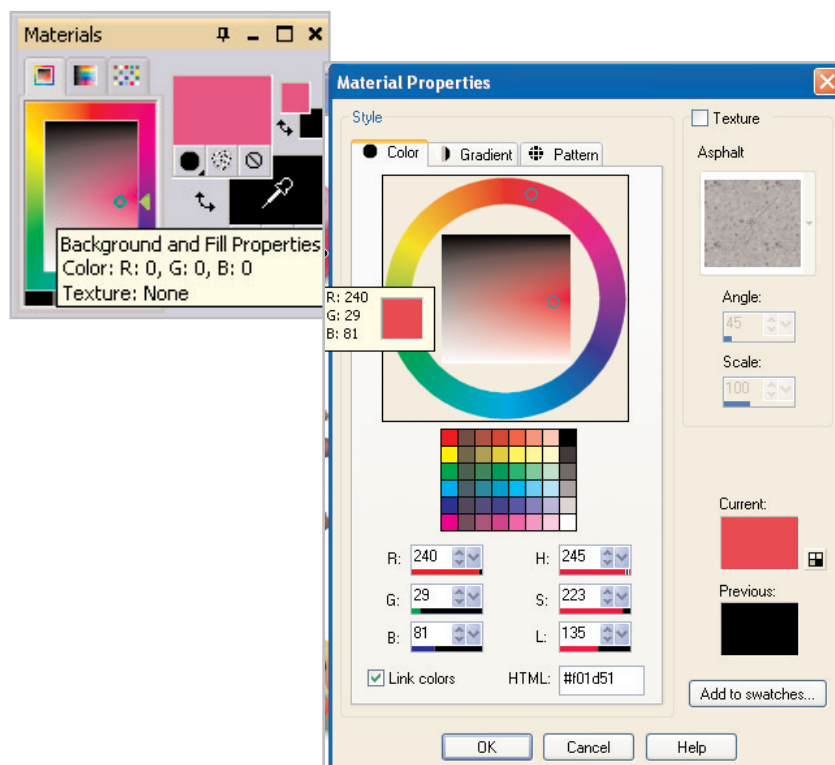


Add Text

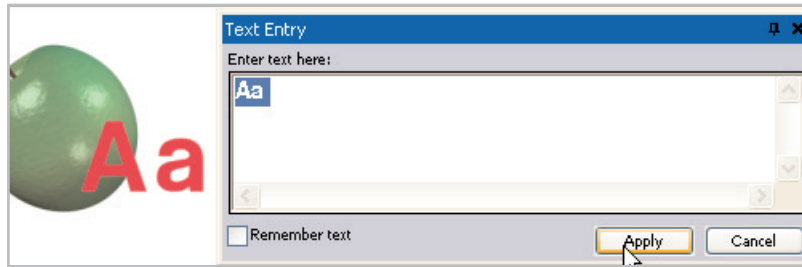
17. Now it's time to add letters to your poster. Select the **Text Tool**. On the Tool Options palette at the top of the screen, you can choose your font and font size. Make sure to choose **Vector** from the **Create As:** drop-down, this will let you move the text easily. For this example we used a font called Coolvetica which we downloaded free from the Internet. You can use the font you like best.



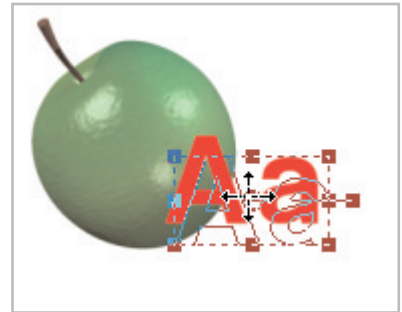
18. Once you've set your font and font size, you can set the color using the Materials Palette. Click the Background swatch (the lower box) to open the Material Properties dialog, here you can choose the color of your text. You can click any of the color boxes below the circle, click anywhere on the colored circle, or click on an area of your image, to choose a color for your text. Here we used the red from our buttons. Once you've chosen a color, click **OK**.



19. Now, click the white area of your image. This opens the Text Entry dialog, where you'll add your letter. Once you've entered your letter click **Apply**.



20. Once the text is applied, you can click the center circle and drag the text into place.

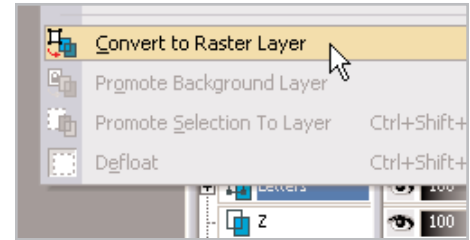


21. Repeat Steps 17-20 for each additional letter of the alphabet.

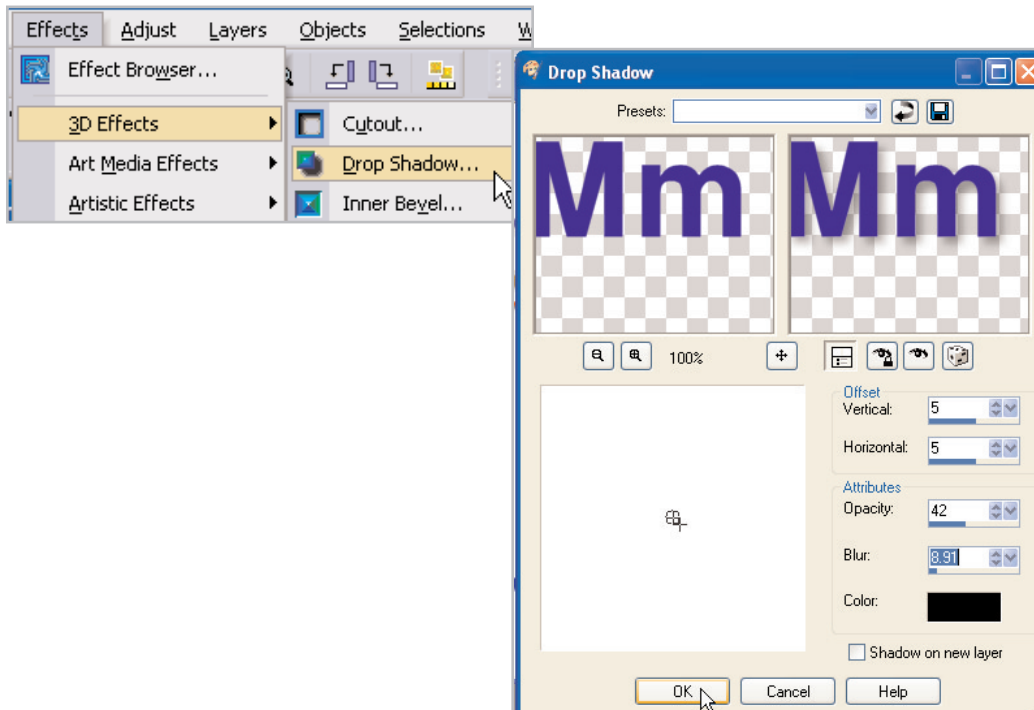


Add a Drop Shadow

22. Now that you've added all your letters, you're ready to complete the project with a drop shadow. Right-click the **Letters** layer on the Layer Palette and choose **Convert to Raster Layer**.



23. Choose **Effects > 3D Effects > Drop Shadows**. In the Drop Shadow dialog, choose the effect that looks best to you and click **OK**. That's it, you're done! Now you can print it out and give it to the special child in your life.



Next Steps:

This is only the beginning. Now that you know how to use Picture Tubes and Layers, you can create all kinds of neat projects. Next time you should try making a poster out of your child's name and Picture Tubes.

